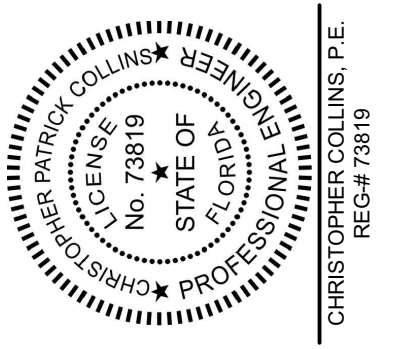




696 N.E. 125th STREET  
NORTH MIAMI, FL 33161  
Phone: 305.720.2079  
C.O.A. 33221



This item has been digitally signed and sealed by Christopher P. Collins, P.E. on the date adjacent to the seal.

Printed copies of this document are not considered signed and sealed and the signature must be verified on any electronics copies.



Digitally signed by Christopher Collins  
Date: 2022.07.14 12:28:17 -05'00'

Revision Date  
Comment

Revision Date  
Comment

Revision Date  
Comment

Revision Date  
Comment

Revision Date  
Comment

Revision Date  
Comment

Designed by: C.P.C.  
Drawn by: A.T.S.

Checked by: C.P.C.  
Approved by: C.P.C.

Scale: 1" = 40'  
Date: 05/25/2022  
Job No.: I002

Plans for  
**FESTIVAL MARKETPLACE**  
2900 W SAMPLE ROAD  
POMPANO BEACH, FLORIDA

**EROSION CONTROL PLAN**  
PHASE II  
OF SITE

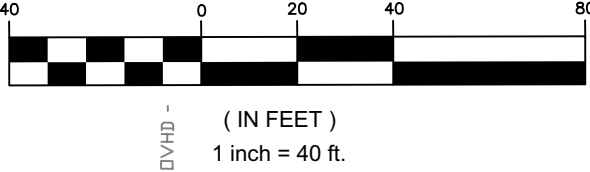


**NOTE:**  
CONTRACTOR IS REQUIRED TO INSPECT ALL EROSION CONTROL DEVICES DAILY AND AFTER EVERY STORM EVENT AND REPAIR AND/OR REPLACE AS NEEDED

**DRAINAGE SYMBOLS LEGEND**

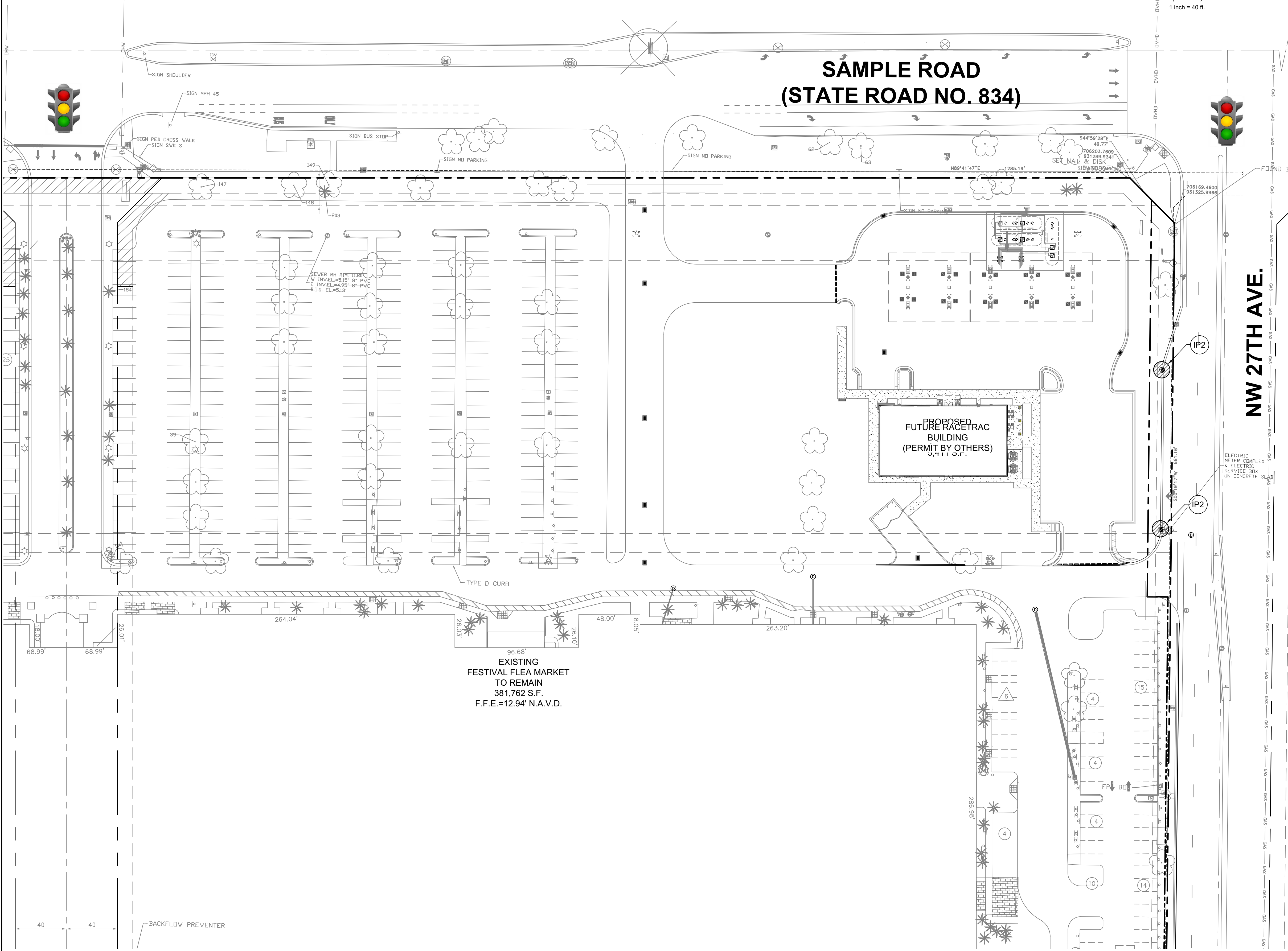
- PROPERTY LINE
- IP2 FILTER SACKS INLET PROTECTION
- PROPOSED INLET

**GRAPHIC SCALE**



**SAMPLE ROAD  
(STATE ROAD NO. 834)**

**NW 27TH AVE.**



**EROSION SEDIMENTATION CONTROL NOTES**

MAINTENANCE OF EROSION CONTROL MEASURES IS OF PARAMOUNT IMPORTANCE TO IMC PROPERTIES. THE CONTRACTOR IS RESPONSIBLE FOR COMPLYING WITH ALL EROSION CONTROL MEASURES SHOWN ON THE PLANS. THE EROSION CONTROL SYSTEM DESCRIBED WITHIN THE CONSTRUCTION DOCUMENTS SHOULD BE CONSIDERED TO REPRESENT THE MINIMUM ACCEPTABLE STANDARDS FOR THIS PROJECT. ADDITIONAL EROSION CONTROL MEASURES MAY BE REQUIRED DEPENDENT UPON THE STAGE OF CONSTRUCTION, THE SEVERITY OF THE RAINFALL EVENT AND/OR AS DEEMED NECESSARY AS A RESULT OF ON-SITE INSPECTIONS BY THE OWNER, THEIR REPRESENTATIVES OR THE JURISDICTIONAL AUTHORITIES. THESE ADDITIONAL MEASURES SHALL BE INSTALLED AT NO ADDITIONAL COST TO THE OWNER. IT IS THE CONTRACTOR'S ULTIMATE RESPONSIBILITY TO ASSURE THAT THE STORM WATER DISCHARGE FROM THE SITE DOES NOT EXCEED THE TOLERANCES ESTABLISHED BY ANY OF THE JURISDICTIONAL AUTHORITIES. REFERENCE THE EROSION CONTROL PLAN AND DETAILS.

THIS PLAN HAS BEEN PREPARED TO ENSURE COMPLIANCE WITH RULES OF THE FLORIDA DEPARTMENT OF ENVIRONMENTAL PROTECTION, CHAPTER 17-25-FAC.

**SITE**

A. SITE CONDITIONS

1. SITE OPERATOR (CONTRACTOR) SHALL PREPARE A CONSTRUCTION SCHEDULE THAT INCLUDES THE DATE GRADING WILL BEGIN AND THE EXPECTED DATE OF STABILIZATION AND SHALL INCLUDE THE CONSTRUCTION SCHEDULE AS PART OF THIS STORM WATER POLLUTION PREVENTION PLAN (SWPPP).

B. SEQUENCE OF IMPLEMENTATION OF CONTROLS

1. INSTALLATION OF CONTROL MEASURES (CONSTRUCTION ENTRANCE, SILT FENCE, FILTER SACKS, GUTTER EEL) ETC.

2. DEMOLITION AND CLEARING, GRUBBING AND EXCAVATION.

3. CONSTRUCTION ACTIVITIES ASSOCIATED WITH THE BUILDING, SITE DEVELOPMENT, AND INFRASTRUCTURE NECESSARY TO SERVE THE PROPOSED PROJECT.

4. FINAL STABILIZATION.

C. PHASING OF CONTROL MEASURES

1. PHASE 1- INITIAL PHASE  
THIS PHASE INCLUDES EROSION AND SEDIMENT CONTROL MEASURES REQUIRED BEFORE AND DURING DEMOLITION STAGE OF CONSTRUCTION.

THIS PHASE INCLUDES

- ESTABLISH STABILIZED CONSTRUCTION ENTRANCE.
- INSTALLATION OF SILT FENCE.
- INSTALL FILTER SACKS IN PROPOSED INLET GRATES AND PLACE GUTTER EEL ON TOP OF GRATES.
- INSTALL FILTER SACKS IN EXISTING ON-SITE STORM INLETS DURING DEMOLITION.

2. PHASE 2- INTERMEDIATE PHASE  
THIS PHASE INCLUDES EROSION AND SEDIMENT CONTROL MEASURES REQUIRED DURING SITE GRADING FROM INITIAL GRADING THROUGH CURB AND GUTTER PHASE.

THIS PHASE INCLUDES

- INSTALLATION OF FILTER SACKS IN PROPOSED INLETS.
- MAINTAIN ALL MEASURES IN PHASE 1.

3. PHASE 3- FINAL PHASE  
THIS PHASE INCLUDES EROSION AND SEDIMENT CONTROL MEASURES REQUIRED DURING FINAL BUILDING CONSTRUCTION, PAVING, AND FINAL LANDSCAPE.

THIS PHASE INCLUDES

- REMOVAL OF GUTTER EELS FROM RIGHT OF WAY INLETS.
- MAINTAIN REMAINING MEASURES FROM PHASES 1 AND 2.

**CONTROLS**

EROSION AND SEDIMENT CONTROL MEASURES ARE TO BE PLACED PRIOR TO, OR AS THE FIRST STEP IN CONSTRUCTION. THE CONTRACTOR IS RESPONSIBLE FOR COMPLYING WITH ALL EROSION CONTROL MEASURES SHOWN ON THE PLANS. THE EROSION CONTROL SYSTEM DESCRIBED WITHIN THE CONSTRUCTION DOCUMENTS SHOULD BE CONSIDERED TO REPRESENT THE MINIMUM ACCEPTABLE STANDARDS FOR THIS PROJECT. ADDITIONAL EROSION CONTROL MEASURES MAY BE REQUIRED DEPENDENT UPON THE STAGE OF CONSTRUCTION, THE SEVERITY OF THE RAINFALL EVENT AND/OR AS DEEMED NECESSARY AS A RESULT OF ON-SITE INSPECTIONS BY THE OWNER, THEIR REPRESENTATIVES OR THE APPLICABLE JURISDICTIONAL AUTHORITIES. THESE ADDITIONAL MEASURES (IF NEEDED) SHALL BE INSTALLED AT NO ADDITIONAL COST TO THE OWNER. IT IS NOTED THAT THE MEASURES IDENTIFIED ON THIS PLAN ARE ONLY SUGGESTED BEST MANAGEMENT PRACTICES (BMPs). THE CONTRACTOR SHALL PROVIDE POLLUTION PREVENTION AND EROSION CONTROL MEASURES AS SPECIFIED IN FOOT INDEXES #100 THROUGH #102 AND AS NECESSARY FOR EACH SPECIFIC APPLICATION. IT IS THE CONTRACTOR'S ULTIMATE RESPONSIBILITY TO ASSURE THAT THE STORMWATER DISCHARGE FROM THE SITE DOES NOT EXCEED THE TOLERANCES ESTABLISHED BY ANY OF THE APPLICABLE JURISDICTIONAL AUTHORITIES.

**A. EROSION AND SEDIMENT CONTROLS**

GENERAL EROSION CONTROL

A. CLEARING AND GRUBBING OPERATIONS SHALL BE CONTROLLED SO AS TO MINIMIZE UNPROTECTED ERODIBLE AREAS EXPOSED TO WEATHER. GENERAL EROSION CONTROL BMPs SHALL BE EMPLOYED TO MINIMIZE SOIL EROSION AND OFF-SITE SEDIMENTATION. WHILE THE VARIOUS TECHNIQUES REQUIRED WILL BE SITE AND PLAN SPECIFIC, THEY SHOULD BE EMPLOYED PRIOR TO ANY CONSTRUCTION ACTIVITY.

B. EXCAVATED MATERIAL WILL NOT BE DEPOSITED IN LOCATIONS WHERE IT COULD BE WASHED AWAY BY HIGH WATER OR STORM WATER RUNOFF. STOCKPILED MATERIAL SHALL BE COVERED OR ENCIRCLED WITH SEDIMENT CONTAINMENT DEVICES.

C. STABILIZATION MEASURES SHALL BE IMMEDIATELY INITIATED FOR EROSION AND SEDIMENT CONTROL ON DISTURBED AREAS. CLEARED SITE DEVELOPMENT AREAS WHICH WILL REMAIN AT ROUGH GRADE FOR 7 DAYS OR MORE SHOULD BE STABILIZED IMMEDIATELY BY COVERING WITH ADEQUATE AMOUNTS OF HAY, OVER SEEDED AND PERIODICALLY WATERED SUFFICIENT TO STABILIZE THE TEMPORARY GROUND COVER, OR BY THE USE OF AN APPROPRIATE ALTERNATIVE BMP.

**PERMIT SET**  
MUST BE ON SITE AT ALL TIMES DURING CONSTRUCTION

**NOTICE**  
INSPECTION REQUIRED  
24 HRS. PRIOR TO COMMENCING ANY WORK IN THE PUBLIC ROW CONTACT THE BROWARD COUNTY HIGHWAY CONSTRUCTION AND ENGINEERING DIVISION AT 954-577-4600 FOR INSPECTION.

**NOTE:**  
APPROVAL OF THIS PLAN DOES NOT CONSTITUTE A PERMIT FOR CONSTRUCTION.

A PERMIT FOR CONSTRUCTION MUST BE OBTAINED FROM THE BROWARD COUNTY HIGHWAY CONSTRUCTION AND ENGINEERING DIVISION PRIOR TO COMMENCING CONSTRUCTION IN THE PUBLIC RIGHT OF WAY.

ALL MATERIALS USED AND INSTALLATIONS WITHIN THE PUBLIC RIGHT OF WAY OR EASEMENTS SHALL BE IN ACCORDANCE WITH BROWARD COUNTY HIGHWAY CONSTRUCTION AND ENGINEERING DIVISION SPECIFICATIONS.

BROWARD COUNTY HIGHWAY CONSTRUCTION AND ENGINEERING DIVISION

☐ PLAN CONSISTENT WITH PLAT REQUIREMENTS  
☐ PUBLIC RIGHT OF WAY APPROVAL FOR PAVING, GRADING AND DRAINAGE

BY: \_\_\_\_\_ DATE: \_\_\_\_\_

DOES NOT INCLUDE APPROVAL OF PAVEMENT MARKING & SIGNS

EXISTING  
FESTIVAL FLEA MARKET  
TO REMAIN  
381,762 S.F.  
F.F.E.=12.94' N.A.V.D.

Call 800-visit sunshine.com for full business days before digging to have built-in response codes before you dig!